



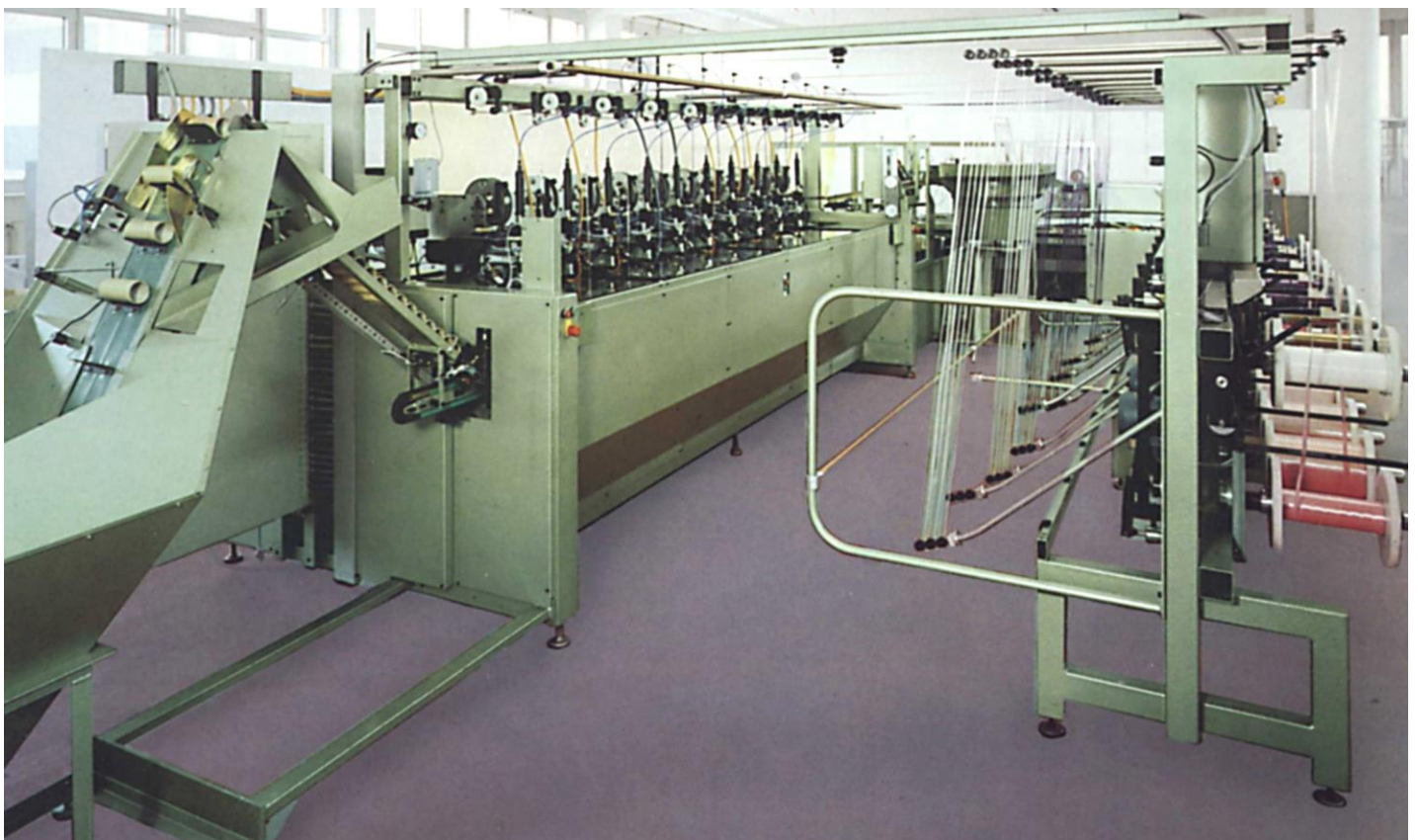
Maschinen GmbH

Fully Automatic Ribbon Spooling Machine SMA 10

INTELLIGENT
RIBBON PROCESSING



SOLUTIONS



Fully Automatic Ribbon Spooling Machine SMA 10

The Ribbon Spooling Machine SMA 10 is a fully automatic machine with 10 winding positions, for ribbon 3 to 10 mm wide, continuously laid on paper- or plastic tubes.

Spooled ribbon lengths are depending on the tube sizes up to 2000 meters.

Highly sophisticated machine controls and –technologies allow a variable winding of the border- and reverse points, resulting in an even wound and flat surface of the produced spool.

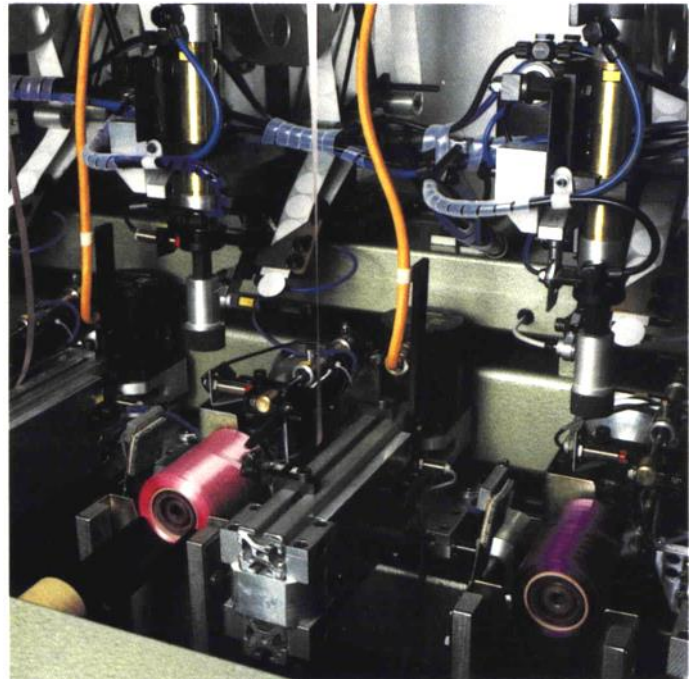
To obtain a constant ribbon tension during the winding process all material supply spools are driven and controlled individually.

Each winding position is equipped with a labelling device. Adhesive labels are provided from a carrier belt during the winding process and picked up by the suction device of the labelling cylinder. The automatic supply of the label is controlled by an optical sensor.

Tubes are elevated out of the tube supply container and stored pre-orientated in the tube magazine. During the winding cycle tubes are released out of the magazine and transported to each winding position with a cup conveyor. After the previous winding cycle is finished, the empty tubes are pushed onto the mandrel of each winding position. The ribbon guiding system moves towards the empty tube and the ribbon is attached to the tube with an adhesive label.

The winding process begins and the machine spools until the electronically preset running length is reached. the machine stops and the scissors cut the ribbon.

The cut ribbon end is attached to the finished spool with an adhesive label. The spools are doffed from the mandrels and are transported to the right side of the machine with a cup conveyor. A new cycle begins.



Additional Equipment:

- Running length control of each winding position.
- Driven and controlled creel.
- Ribbon breakage control with machine stop.
- Automatic connection to a pressing station for side flanges, machine type SA.
- Automatic labelling of the side flanges.
- Automatic infeed into fully automatic JBF packaging machines.

Production Data:

- Cycle time for spools with 500 meters running length: 100 seconds

Technical Data:

Winding positions:	10
Mandrel speed:	max. 2000 r.p.m.
Winding speed:	max. 400 m/min
Winding length:	infinitely adjustable
Material supply:	cylindrical spools, max. 300 mm dia. , 450 mm long
Power consumption:	7,5 kW
Air consumption:	approx. 2,5 m ³ /h
Air pressure:	6,0 bar
Machine weight:	approx. 3200 kg
Space requirement:	approx. 30 m ² with creel

Subject to technical modification without notice.

JBF Maschinen GmbH

Flurstrasse 8 - D-88367 Hohentengen - Tel. +49 (0)7572 7641-0 - Fax +49 (0)7572 7641-30
Internet: www.jbf-maschinen.de / E-mail: info@jbf-maschinen.de